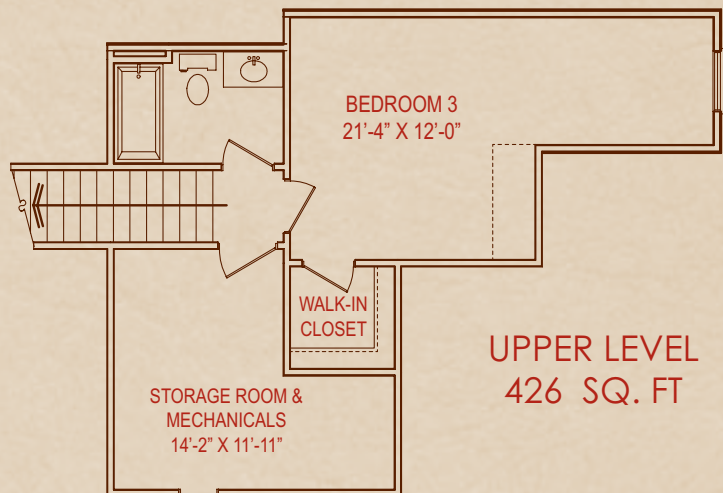


**MAIN LEVEL**  
2315 SQ. FT

## The Sheldon

- Vaulted ceilings in Dining Room, Great Room and All-Season Room
- Three full baths
- Luxurious Master Suite
  - ♦ Separate walk-in shower and deluxe garden tub with tiled deck
  - ♦ His and her sink vanities
  - ♦ Large walk-in closet
- All-Season Room to enjoy year round!
- See-thru gas fireplace with granite surround
- Five Star Kitchen ★★★★★
  - ♦ Granite countertops are standard!
  - ♦ Breakfast bar with arched opening
- Elegant Dining Room
- Abundant storage space
- Oversized two car garage
- 10' X 13' Patio
- Living Space is 2,142 sq. feet



**UPPER LEVEL**  
426 SQ. FT

Note: This flyer is for illustration purposes only. Information in this document is subject to errors and omissions and is not warranted. Room sizes are approximate and products and specifications may change. This document is not part of a legal contract.

