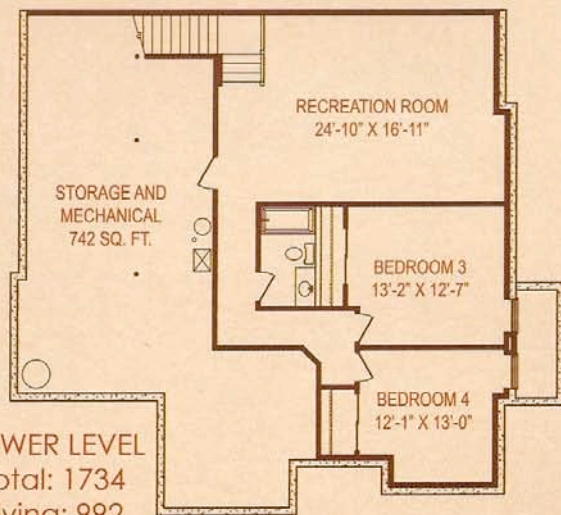


## The Upton

- Finished Basement
- Abundant storage
- Open floorplan
- Vaulted ceilings in Great Room, All-Season Room and Study/Bedroom 2
- Tray ceiling with rope lighting in bedroom
- Separate walk-in shower and deluxe garden tub with tiled deck
- Large walk-in closet
- Two and a half baths
- All-Season Room to enjoy year round!
- Gas fireplace with granite surround
- Five Star Kitchen ★★★★★
  - Granite countertops are standard!
  - Breakfast bar and Entertainment bar
- Oversized two car garage
- 10' x 13' Patio
- Living Space is 2,811 square feet



Note: This flyer is for illustration purposes only. Information in this document is subject to errors and omissions and is not warranted. Room sizes are approximate and products and specifications may change. This document is not part of a legal contract.